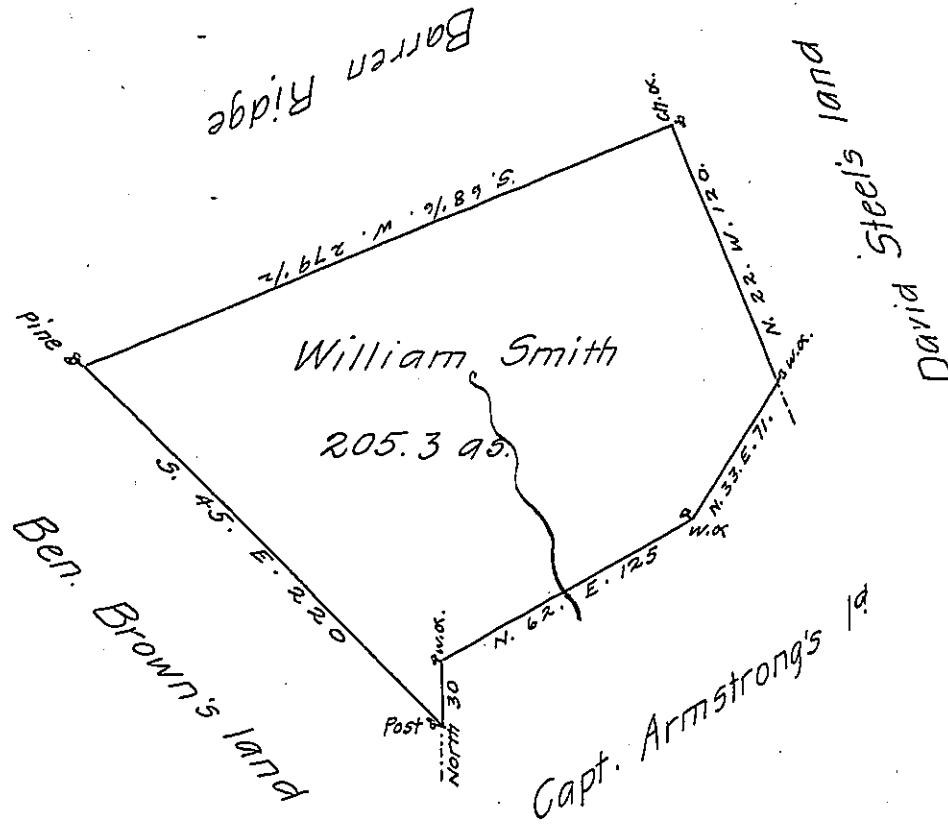


D-47-84



Courses & Distances

S. 45. E.	220
North	30
N. 62. E.	125
N. 33. E.	71
N. 22. W.	120
S. 68 1/2. W.	279 1/2

The Draught of a tract of land Called Smiths Retreat  
 situate in Derry township, Cumberland County containing Two hundred &  
 five acres & three tenths of an acre & the usual allowance of Six pr. Cent  
 for roads &c. surveyed for William Smith Janry the 8th. 1785 in Pursuance  
 of a Warrant The Honorable Vice President of the Supreme Executive  
 Council Dated Decr. the 20th. 1784.

Jas. Harris D.S.

To John Lukens Esqr. Survr Genl

Now Mifflin County

IN TESTIMONY that the above is a copy of the original remaining on file in  
 the Department of Internal Affairs of Pennsylvania, made  
 comformably to an Act of Assembly approved the 16th day of  
 February 1833, I have hereunto set my hand and caused  
 the Seal of said Department to be affixed at Harrisburg,  
 this third day of March 1907

*Isaac Brown*  
 Secretary of Internal Affairs.